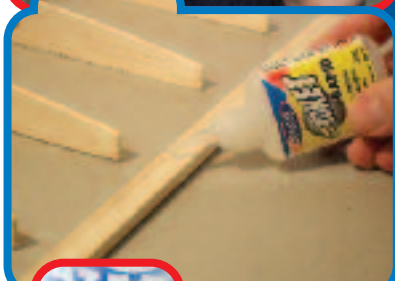


# WORLD CLASS MODELLING PRODUCTS



'The strength inside your model'



"as modellers and chemists we take pride in caring for the modeller through the products we make"



## Welcome to our catalogue.

Whether you are an expert or beginner, modelling is a fantastically rewarding hobby and we hope our products can enhance the pleasure that this can bring.

Please support your local modelling shop or in case of difficulty use our sales website for supplies. Furthermore we welcome suggestions for new products by email to [john@deluxematerials.com](mailto:john@deluxematerials.com).

If you are a dealer we ask you to contact your local distributor (see list on back) or consult our website [www.deluxematerials.com](http://www.deluxematerials.com).

We look forward to serving you in the future.

*John and Vivienne Bristow*

# Adhesives

### Roket cyano range:

Highest quality cyanoacrylate adhesives. Designed for use with precise Micro Tip anti-clog applicator.

### Roket Odourless:

Foam-safe, non-fogging, crystal clear, low odour grade, for bonding crystal clear plastics and foam; sets 10-20 sec.

AD46

### Roket Max:

Thick, maximum gap-filling adhesive; sets 10-20 sec.

AD45

### Roket Rapid:

Medium viscosity, fast setting adhesive; sets 5-10 sec.

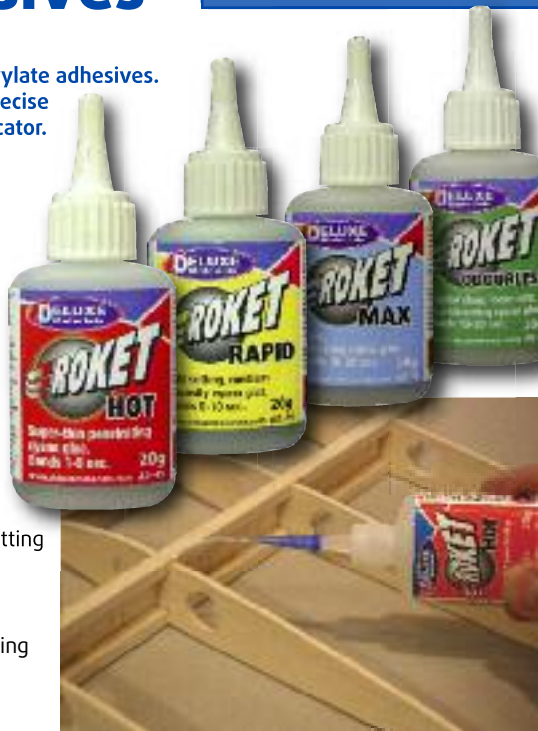
AD44

### Roket Hot:

Super-thin, fast, penetrating adhesive; sets 1-5 sec.

AD43

All sold as 20g bottles.



**Speed Epoxy:** A new range of high-quality Speed Epoxy glues containing unique toughening agents to increase structural strength, shock & crash resistance.

They set clear & stay clear over time. Like most epoxies they are designed to set at temperatures as low as 0°C. Fast setting for wood, metal, china, plastics & glass. 3 products offer various setting times & strength to suit the application. Toughened like glass. Non brittle in use.

**Speed Epoxy 4 Minute:** 28g syringe AD40, 71g AD5, 112g AD3 and 224g twin bottle packs AD39.

**Speed Epoxy 20 Minute:** With increased bond strength and setting time. 71g AD53, 224g AD51.

**Speed Epoxy 1 Hour:** Long working time and maximum bond strength. 224g AD50.



### View Glue: Back scene adhesive.

A special adhesive for bonding model rail / diorama back scene papers to hardwood, hardboard, painted surfaces, plaster, plastic coated and plaster board. It allows easy positioning and adjustment. Contents 225ml, pack covers 7sqm. AD61



**Tissue Paste:** A specially formulated paste for bonding tissue paper used on traditional model airplanes.

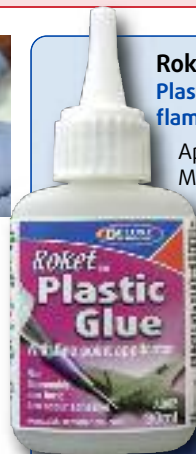
The formulation allows delicate tissue paper to be placed onto airframes and smoothed without tearing. It dries clear to give a strong bond to all types of tissue.

50ml bottle AD60

### Roket Plastic Glue: Liquid Plastic cement. Non-toxic, non-flammable, low odour.

Apply with micro tip brush, or Micro Tips and tube. Bonds in 8-10 secs and builds strength. Bonds: styrene, polyester, butyrate, plastic card. Water washable.

30ml bottle AD62



### R/C Modellers Glue: Multi-purpose gap filling canopy glue.

Thick and tacky, dries clear, remains flexible. Bonds combinations of wood, plastic, fabric, foil, painted surfaces. Ideal for:

- Model aircraft canopies.
- Sealing gaps & small holes on plastic parts & covering film.
- Repairing tears in covering film.
- Application of rivets on scale models.
- Model boat plastic windows.
- Glazing small scale plastic model aircraft windows.



112g bottle AD12

### Foam 2 Foam: Very high tack glue.

Strong hold, allows adjustment. Dries clear, flexible.

Ideal for foam aircraft & railway scenery. Bonds: Depron, white, blue & EPP foams, wood & plastic. Does not bond Elapor (use Super Crylic!). Also an excellent fabric glue. Will not mark silk.

50ml AD34



**“as modellers and chemists we take pride in caring for the modeller through the products we make”**



Massimo Selva,  
Italian and San Marino  
F3A and F6A champion



**Super Crylic!:** Adhesive for models where high impact plastics need to be bonded to wood, metal G.R.P. etc.

- Ideal for:
- Difficult model aircraft repairs.
  - Wooden engine bearers.
  - Plastic canopies and cowlings.

May be used with light glass cloth.

**Model boat use:**

- To set propshafts and rudders inside boat hulls (with lightweight glass cloth).
- For repairs to plastic hulls.

Will even bond oily surfaces. If it can't be glued with Super Crylic!, it probably can't be glued!

60g twin pack. **AD23**



**Dolls House Tacky Glue:** Very sticky glue which dries clear, flexible, & is non-staining. Use for:

- Bonding fabric.
- Plastic windows.
- Flower making.
- Bonding ceramic or flexible tiles.
- Glazing small windows in scale models.

Superior to other tacky glues in that it dries clear and bonds plastics, varnished and painted wood surfaces and many other materials.

112g bottle **AD27**



**Foam Glue Kit:** Specially designed kit of foam safe glues for the construction and repair of Depron, EPS and Styrofoam models:

Kit contains Foam 2 Foam glue, Speed Epoxy, Roket Odourless (Foam safe), Foam Blaster and building tips. **AD56**



**ARTF Glue Kit:** Selection of the perfect glues for construction of ARTF model aircraft.

Includes: 4 minute, 20 minute Speed Epoxy, Roket Rapid Cyano, adhesive guide, anti clog glue tip, glue chart for beginners and hints and tips. **AD52**



**Speedbond:** Special modelling PVA that contains no fillers.

Has unique solvent chemistry for faster drying and is superior to many D.I.Y PVA glues.

112g **AD10** and 500g **AD11** bottles.



**Fusion:** Strongest acrylic adhesive for combinations of GRP, metal & wood and nearly all plastics such as PVC, styrene, acetate, acrylic.

A liquid & powder system mixed 1:1 which sets very hard in use. Extremely useful for bonding in high stress parts such as engine mounts, bulkheads, metal fasteners onto polyester, epoxy or carbon fibre GRP. 75ml pack **AD19**



**Glue 'n' Glaze:** For glazing & bonding crystal clear windows & canopies.

A liquid plastic film-forming polymer which bonds most plastics and dries to crystal clear film. It is ideal for miniature windows 00 gauge or up to 6mm across. It will not fog plastics making it ideal for the safe bonding of scale aircraft, plastic canopies and glazing dollshouses.

Bonds wood, plastic, metal, painted surfaces. Water clean up. 50ml **AD55**



**Plastic Magic New Formula** – bonds plastics other glues cannot: Deluxe Materials new formula Plastic Magic is a liquid solvent glue that produces invisible glue lines.

The new **safer** formula can be applied with the Deluxe Materials Pin flow solvent glue applicator or conventionally with a fine paint brush. Plastic Magic bonds nearly all commonly used modelling plastics including polyester, styrene, ABS, PVC, butyrate, and Polycarbonate.

50 ml bottle **AD24**



	Polyester	Styrene	ABS	Acrylic	PVC	Butyrate	Pol Carbowate
Major Competitor	✓	✓	✓	X	Poor	✓	
New Formula Plastic Magic	✓	✓	✓	✓	✓	✓	✓



# Adhesives

# Adhesives



**Aliphatic Resin:** Famous "yellow" wood glue used in professional applications where hard woods are used; dries crisper than PVA giving better sanding.

Will not pull joints as it sets, resulting in better dimensional stability.

Also sets at low temperatures and is water resistant. Use in miniature furniture making where its useful properties include:

- Taking a stain.
- Faster grab time.

112g AD8 and 500g AD9 bottles.

Recommended by:



**Decorator Glue:** Thick glue, which, like Tacky Glue dries clear overnight.

It has instant stronger hold round corners and on vertical surfaces whilst also allowing repositioning. Bonds fabric, leather, silk, paper, wood, glass, plastic, metal, painted and varnished surfaces.  
12g AD26



**Super'Phatic!** Highly penetrating yellow aliphatic glue with "wicking" action for close fitting pre-assembled joints.



Dries fast and bonds wood, white and blue foam, plastic. Is waterproof when set and produces tougher joints than cyano. Ideal for:

- Assembly of slot together models.
- Repairing splits and cracks in wood or reinforcing suspect joints e.g. on ARTF ready built model aircraft.
- Indoor lightweights (as loses 50% of weight as it dries).
- Depron Foam models.
- Bonding carbon fibre into Depron Foam.

50ml bottle AD21

**Wallpaper Paste:** Ready-mixed paste that dries clear.

It is non staining & does not attack copper tape. 250ml AD32



# Useful Glue Accessories



Filling the Pin Flow. Go to 'How to...' section on page 14

**Pin Flow - Solvent Glue Dispenser:** An applicator specially designed for the precise control of liquid solvent plastic adhesives such as Plastic Magic.

When even a brush can sometimes deliver too much this breakthrough device will deliver just the right amount of adhesive to bond the most intricate parts. Prevents glue runs. Invisible joints especially on clear plastic. AC11



Registered Design No. 4008332



**Micro Tips & Tube:** Pack of six micro tips and PTFE tubing for precise anti-clog application of Roket CA glues.

AC9



**Pin Point Glue Syringe Kit:** Pack of 2 dispensing syringes and 3 sizes of stainless steel needles for accurate application of water based glues: R/C Modellers Glue, Speedbond, Aliphatic Resin, Tacky Glue, Decorator Glue.

Ideal for making rivets on scale models and for dispensing fluxes and oils in model railways. Clean syringes and tips with warm soapy water after removal of glue.

Stop clogging overnight by resting tips on damp sponge or in water. AC8



**Scenic Spray Glue:**  
Spray glue for the attachment of scenic materials, eg. scatter to trees or baseboards etc.

Non-staining. Dries clear and tacky. Gentle spray action. 100ml AD54



**Rocket Card Glue:** For fast assembly of card models eg. railway buildings and rockets.

Recommended by:



Also bonds Balsa wood, paper and card to most plastics. Use sparingly, align and press parts together for instant bond. Water clean up. 50ml bottle with tip. AD57



**New Formula Cover Grip:** Heat sensitive adhesive for bonding plastic covering films (even aluminium foil) and trim to balsa and ply parts on the fuselage etc. where adhesive will not properly bond.

New formula dries non-tacky. Use around oil affected areas such as the engine bay where it will reduce film lift due to fuel penetration. 150ml bottle AD22

**Scatter Grip:** Special adhesive which dries tacky allowing plenty of working time for bonding scatter materials.

Ideal for railway layouts, gardens, dolls house scenery.

150ml bottle AD25



**Tacky Wax:** Wax adhesive for holding miniatures in place whilst allowing re-positioning. 28g tub AD29



## Adhesives



**Pin Point Bottle Kit:** For precision gluing.

A small dispensing bottle ideal for minute application of water based glues such as R/C Modellers Glue, PVA glue and fluxes. Ideal for many tasks where fine finger controlled gluing action is needed. It is supplied with a variety of 3 plastic and metal tips that are easily cleaned after use with water.

AC10

**Foam Blaster:** Unique spray which makes the rapid safe bonding of foam and painted plastic parts possible without ca glue attacking them.

Coat the surfaces to be bonded carefully. Use smallest amount of Rocket Odourless foam safe cyano glue then bond or "tack" them together. Works on white, blue and pink foam surfaces in conjunction with wood or foam. Works by coating, protecting and activating the surface. 50ml spray bottle AD49



**Rocket Blaster:** Spray which permits Rocket to bond difficult surfaces & accelerate the cure.

Pre-condition surfaces and then apply Rocket for instant bond. 50ml AD17 and 250ml AD59 top up for the 50ml spray.



**Rocket Powder:** Strengthening powder for use with thin cyano adhesives to improve gap filling and toughness.

Flows like liquid into spaces to take exact shape. Use for filling gaps where strength is needed. Sets in seconds with Rocket Hot or Rapid cyano; can be filed, drilled and tapped. 40g bottle AD18



**Glue Buster:** Debonder and dissolver of superglue.

Releases bonded skin and removes superglue stains. Stays on site for faster debonding action. Contents 28g AD48



**Ready-2-Glue Stand:** Fast & easy glue dispensing designed to safely hold glue bottles upside down.

The glue is always ready to dispense, saving time and waste. Easily and quickly assembled. Designed for use with Deluxe Materials glues including: Speed Epoxy, R/C Modeller Glue, Aliphatic Resin, Tacky Glue, & Speedbond.

AC12



## Useful Glue Accessories

# Scenics

## Scenic Rust:

A three part system that puts a realistic scale like rust finish onto all types of paintable surfaces, wood, plastic, metal, within hours thereby creating greater realism for all types of modelling.

BD27



## Scenic Snow Kit: For dramatic winter snow effects.

Complete kit containing high brightness Snowflakes, Scenic Bond adhesive and Icy Sparkles.

Covers up to 0.5 m<sup>2</sup> BD29

## Scenic Shovelled Snow: A unique type of snowflake developed for creating special snow effects.

Ideal for piled snow along with snowballs and snowmen which are not possible with other types of snow. Mix with Scenic Spray glue (see page 13) or Scatter Grip and mould to shape.

500ml BD26

## Scenic Snowflakes: For the creation of dramatic snow scenes in minutes.

Allows you to easily create real snow effects such as newly fallen, melted, slipped and frozen, on houses, trees and vegetation. Scenic Snowflakes are different to other snow because they allow you to add the detailed snow effects that will distinguish your work from other common 'picture postcard' winter scenes.

Coverage up to 1.5 sq m. 500ml shaker pack BD25



## Making Waves: For creating waves, ripples, waterfalls and moving water effects.

Making Waves is a 1-part, clear setting, water based low odour resin that holds its shape, even on vertical surfaces. It can be used to form waves, texture ripples on water surfaces (eg Solid Water) and even waterfalls. Colour with water based paints.

100 ml BD39 and 250ml BD40 packs.



# Finishing Products

## Eze Dope: A specially formulated water soluble dope for shrinking model airplane tissue paper.

Its water solubility, low viscosity and low odour make it easy to apply and clean up. It is non flammable, has little odour and dries rapidly to a semi-matt finish that adds strength to all types of tissue. 250ml bottle BD42



## Liquid Gravity: A brand new non-toxic, easy flowing, weighting system for model railway rolling stock, model planes, boats and cars.

Specially designed to pour into small cavities and set in place with adhesive such as Rokat Card Glue, R/C Modellers Glue, or Speed Epoxy. Use to improve electric conductivity & stability of rolling stock, adjust balance point of model planes, boats and submarines.



240g pack BD38

## Eze Kote: Laminating and finishing resin for balsa and foam models.

Eze-Kote is a 1-part water based foam-safe, low odour, resin alternative to epoxy. Brush onto balsa and light glass cloth to create a tough, ding and fuel resistant film that can be sanded easily and painted after 20-30 mins.

Coverage: 75ml covers approx 1m<sup>2</sup> /coat. 500ml bottle BD37



## Model Lite: Strong lightweight filler which sands easily.

Use only where a strong joint is **not** required. Use for grain filling by applying with plastic sponge. Bonds wood, foam, fibreglass. White or balsa tint for use in aeromodelling under clear covering film. Ideal for enhancing model rail scenic layouts eg creating ploughed fields.

240ml pack, White BD5, Balsa Tint BD6.



## Aerokote: A two-part highly fuel resistant lacquer for the protection of cellulose, enamel, and nitrate dope finishes.

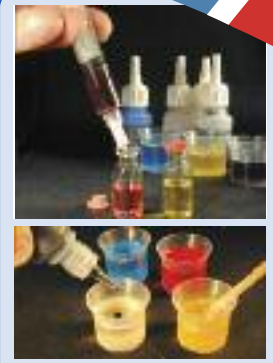
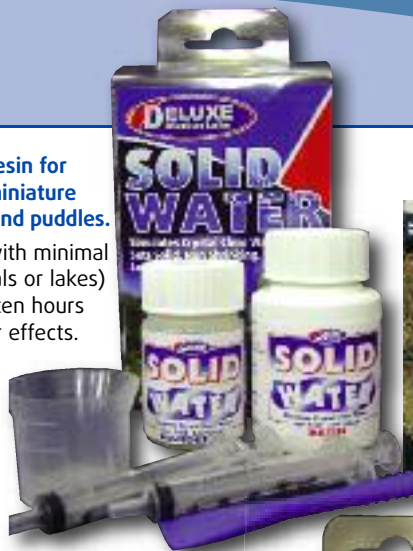
Touch dry in 5-10 minutes resulting in dust free finish. Gloss or semi-matt finishes are achieved by mixing the two. Hides surface blemishes. Always test before use on unknown paints. Brush thin coats consistently across area. Allow 24 hours before re-coating. Wash brushes with cellulose thinners.

100ml bottle with catalyst; Gloss BD18, Matt BD19, Catalyst BD17.

**Solid Water:** A low odour, 2 part resin for simulating crystal clear water for miniature bowls, garden ponds, canals, lakes and puddles.

Creates the illusion of deep water with minimal thickness. Use it for still water (canals or lakes) in railway layouts. Can be textured ten hours after mixing to create moving water effects. Coverage 1-2 metres 10cm wide up to 2/3 mm deep.

Available in 50ml **BD34**, 90ml **BD35**, 180ml **BD20b** and the new larger economy 350ml **BD36** size for larger dioramas.



**Scenic Colours:** Pack of 4 dyes in dropper bottles and additive to make Scenic Water white.

Ideal for making drinks, jellies, custard, and blancmange etc. **BD23**



**Scenic Water:** A re-meltable one part resin that pours, flows and sets as you want it, for simulating static and moving water effects in dolls houses.

A one part resin for small liquid projects eg simulating drinks, or water in sinks and baths, bubbles, and many food items including jellies. Melts at around 60°C. 125ml **BD43**



**Scenic Fibres:** Scenic Fibres work with Scenic Water to allow the easy and faster modelling of more realistic moving and white water eg waterfalls, rivers.

Forms a base onto which Scenic Water clings as it is poured or brushed even down vertical surfaces in waterfalls. 0.5 metre pack **BD28**

## Scenics



**Aeropoxy:** Super thin epoxy for laminating and moulding.

Use with lightweight glass cloth to add strength and toughness to models.

300g pack **BD1**



**Epoxy Wing Joining Kit:**

Laminating epoxy & glass cloth (.75 m) in kit form & sufficient quantity to join a set of wings.

45g kit **BD10**



**Micro Balloons:** Lightweight "free flowing" white powder which is mixed with polyester or epoxy resin to make an easy sanding strong filler.

Can also be used to create snow effects with Scatter Grip glue.

250ml bottle **BD15**



**Lightweight Fibreglass Cloth:** For laminating.

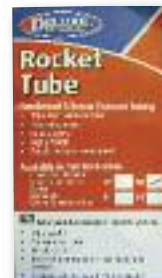
Unique fabric finish for better "wetting out" and strength.

Available in 34g/sq m **BD12**, 51g/sq m **BD13**, 78g/sq m **BD14** (all 1 sq metre) & 24g/sq m **BD11** (2 sq metres). Use with Eze-Kote or Aeropoxy.

**Flexikote:** A two-part fuel resistant lacquer which dries flexible and is more tolerant to paints.

Ideal for covering films and fabrics. Use to seal edges of covering fabrics. Can be used directly onto foam with or without glass cloth.

150ml bottle **BD4**



## Silicone Tubing

**Rocket Tube:** Triple layer fabric reinforced silicone tube with 10 times the strength of normal silicone.

Resists 250°C, pressure proof, highly flexible for glo and gasoline engines. 10cm - 17mm bore **RT1**, 19mm bore **RT2**, 21mm bore **RT3**, 24mm bore **RT4**.

## Finishing Products

# How to ...

Deluxe Materials would like to acknowledge and thank the expert modellers who have used our products and who have described and illustrated their techniques in the following articles. We hope you will find these useful in achieving similar excellent results.

## Using Cyano-acrylate Adhesives

### ROKET HINTS AND TIPS

Roket cyanoacrylate has rapidly established itself as one of the leading brands of ca adhesive. In this section we provide some useful hints and tips when using this range.



- CARE IN OPENING THE BOTTLE:** Release any pressure inside by holding the bottle away from your face. Hold the bottle tip against a solid surface when you cut the tip.
- ACHIEVING MAXIMUM BOND STRENGTH:** Don't leave a joint open for too long. Don't reposition a joint. When using thick grades Roket Rapid / Max, apply glue to one surface and "squash" glue into a thin layer. Add a fillet of Roket Max and cure with a quick spray of Roket Blaster.
- AVOIDING CLOGGING:** Before replacing the cap set the bottle on to a hard surface to knock back any remaining ca into the bottle and then squeeze the bottle to blow any air through. Use Micro-tips to dispense thin grade Roket Hot.
- TREATING ACCIDENTS:** Bonded skin, use warm soapy water and a spoon to release bonded fingers. Glue Buster can also be applied, then roll fingers gently together.

If accidents occur and there is concern or doubt please seek medical advice.

- USING ROKET BLASTER KICKER:** Use only when needed, as it will tend to slightly reduce bond strength. Avoid breathing its vapour.
- BONDING FOAM:** To be sure use Roket Odourless grade on one surface of EPS Depron foams. Bring dry surfaces previously treated with Foam Blaster together for fast bond. Roket Rapid and Max may bond other types of foam e.g. on EPP, EPO but check on scrap beforehand.
- AVOIDING BLOOMING & REMOVAL OF SURFACE MARKS:** Blooming is un-reacted superglue that reacts with moisture in the air to spoil surfaces. Use the odourless grade; avoid gluing in areas where there is damp or moisture. Use minimal glue and apply in uniform manner. Glue Buster will quickly dissolve away cured superglue.
- FILLING GAPS > 0.5mm:** Use Roket Max with Roket Blaster to cure the glue. For larger gaps pour in Roket Powder and add Roket Hot ca.
- BONDING SMOOTH PLASTICS:** Abrade surfaces & use Roket Blaster to assist bonding smooth surfaces such as polycarbonate acrylic & other clear plastics.

**STORING ROKET GLUE:** Heat and moisture degrade ca shelf life. Unopened bottles can be stored in the fridge but should be allowed to return to room temperature before use. Store opened ca in a cool dry place away from the light.







## Super'Phatic!

**THE non-fuming CA alternative.** By Rick Godley

Having used CA for some time, I have found a number of weaknesses: it dries hard, difficult to sand, does not allow adjustment and, in my case, the fumes cause an allergic reaction. An alternative was suggested to me – Deluxe Materials Super'Phatic!

I immediately found the major advantages of Super'Phatic! There are no odours or fumes. It is thin and wicks easily into wood making it ideal for laser cut kits. It allows adjustment and is suitable for most materials such as foam, plastic, balsa, ply, hardwood and carbon fibre.

1. I used it to build a Guillows model SE4 laser cut kit. I pinned the plan to a building board, covering it with a plastic sheet.

2. I then pressed out the laser cut parts. These were well cut and dropped out easily.

3. I then dry assembled the wings on the plan, pinned them down and glued all the joints with Super'Phatic!

The needle applicator allows control of the amount of glue and access to crevices without disturbance of the parts. The applicator must be cleaned after use or it will block forever! Place it in a jar of water and just blow it through when next you use it.

I allowed 12 hours for drying, then removed excess dried glue, sanded lightly and was ready for covering.

4. I used tissue, Deluxe Materials' Tissue Paste and water based Eze Dope.

### Fitting plastic hinges to foam.

I usually use CA for fitting plastic hinges so I thought I would give Super'Phatic! a try.

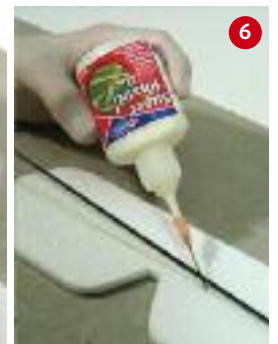
5. I made a slot, added a small amount of Super'Phatic! to both sides of the hinge and slid it in place. The glue adhered to the plastic and wicked into the wood.

Super'Phatic! can also be used to fix fibre type hinges, aiding performance with its flexibility.

### Bonding carbon fibre to foam

Then I tried fitting carbon fibre strengthening rod to a foam wing with Super'Phatic!

6. I cut the half depth slot for the rod in the foam, ran a bead of Super'Phatic! along it and inserted the rod. I cleaned off excess glue; you can do this with Super'Phatic! without sticking tissue to your fingers or model. I checked positioning, adjusted and left it to dry. A very solid job.



## Eze Dope

**"Congratulations on reinventing the wheel, this Eze Dope is a fantastic product!"**

Keith Turner, Blackburn Models supplies

1. Having glued the air-frame together with Super'Phatic!, I left it to dry for 24 hours. It is now time to cover the individual parts with tissue. Deluxe Materials have two new products, Tissue Paste and Eze Dope.

2. The Tissue Paste seems to flow better from new long dispensing nozzle/cap giving a very fine, controllable bead of paste.

Eze Dope works like the original dope, but without the user getting a little wobbly on the fumes...!

3. First, cut 2 pieces of tissue to size, with an inch overlap and apply a thin bead of the Tissue Paste around the top edge of the frame and spars. Lay a cut sheet of tissue on the wing frame. Starting at one end, carefully press the tissue paper onto the paste, smoothing out wrinkles. Turn over and repeat, & leave to dry for 24 hours.

4. When dry, trim off the excess tissue and smooth down the edges. It is now time to apply the Eze Dope. This product is great, easy to use, no fumes and water soluble!

5. First for the pre-shrinking stage find a small fine spray bottle. With the end of the wing propped up, sparingly spray a 10% dilute solution of Eze Dope onto the tissue, just wetting it all over. Then repeat on the under side. This will pre-shrink the tissue and seal it so as to minimize any sagging on next coat. Leave to dry thoroughly for 24 hours, I understand it is possible to speed the drying time up using a hair-dryer, but I did not try this. When thoroughly dry you will see that the tissue has shrunk and is attached to all the ribs etc.

6. I wanted the model to be green, so I experimented with Deluxe Materials Scenic Colours to tint the full strength Eze Dope. These dyes are water based and are compatible with Eze Dope. Into a mixing cup I poured a small amount of full strength Eze Dope, then added the colour drop by drop. You get bottles of red, blue, yellow and black in the kit. You can have the colour you want with a little experimentation! Apply with a soft brush to cover the pre-shrunk tissue, you will get a small amount of sagging, but this will disappear when dry. Turn over and repeat with a different colour if you want. Smooth the edge over, using the Eze Dope to 'stick' the tissue down. It is important to do both sides at the same time as this will avoid any distortion in the frame as dries in 24 hours.

Another coat can be brushed on when dry to deepen the colour. There you have it... its easy, water soluble and no side effects... it's Eze Dope!

### Hints and Tips on Eze Dope

- Use the brush wash (super dilute solution of Eze Dope) as the alternative to pre shrinking with water.
- Use a soft dope brush (half inch).
- Make the first coat very light.
- Work quickly.
- You can use a heatgun... unlike original dope which will smell too much.
- Warps can be built in easily with a gun.



Rick Godley



## Eze-Kote laminating and finishing resin

### An alternative to Epoxy and Glass...

Being in the process of building a Mick Reeves 1/4 scale Spitfire Mk IX, I decided to try Deluxe Materials Eze-Kote, with their 0.6oz (24g) Lightweight Fibreglass cloth.

It turned out to be a superb product, easy to apply and sand, quick drying, and being water soluble you can clean the brushes etc. easily under the tap. The finish is easily as good as epoxy in my opinion, but 10 times quicker, with none of the mess attached to Epoxy. I finished covering both sides of one tailplane panel in a day! Two coats of primer the next morning and I was ready for the top coat! Superb!

So here's how I did it:

**1.** Firstly, I prepared the surface with Model Lite to fill any imperfection in the surface.

**2.** Applying Eze-Kote couldn't be easier. No sticky, mixing etc. It's ready for use straight out of the bottle!

I applied a fairly thick coat on the bare balsa, and half an hour later, it was dry and ready to sand!

Application of the cloth - I cut a piece of cloth about 60mm oversize all round, carefully laid it over the surface and gently smoothed it out.

With the same brush, starting at the leading edge, I applied a generous amount of Eze-Kote resin. It easily wicked into the cloth. Gently working out any wrinkles was simply done with the brush.

**3.** I used an old credit card to remove any excess resin. I then washed the brush out in water and retired for a cuppa!

**4.** I left it to dry thoroughly for an hour and then removed excess cloth with light sanding. Eze-Kote sands VERY easily; there is no waxy residue to get through and no clogging of the sandpaper. Don't sand too heavily and go through the cloth!.

**5.** I was now ready for the second coat of Eze-Kote resin. Job done!

Should you want to, a further coat of Eze-Kote can be applied.

When the tailplane was thoroughly dry, I turned the tailplane over and repeated the process on the other side.

**6.** One final check all over and I was ready for high build primer, one coat each side and its ready for paint in 1.5 days!



### Conclusion

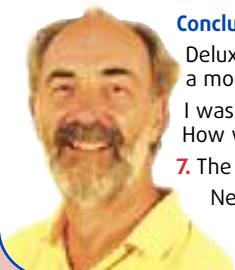
Deluxe Materials Eze-Kote, is a fast, easy, water soluble, fuel resistant and user friendly way to cover a model.

I was very impressed at how easily the resin wicked into the cloth, adhering well to the balsa surface. How well the two applications blended and feathered into each other at the edges.

**7.** The other great bonus was cleaning the brushes under the tap!

Needless to say I will be covering the whole model with Eze-Kote.

*Rick Godley*



## Just glue 'n view it! *By Terry Smith*

The difference between a good and an outstanding scenic layout can often be the backdrop or scene in which the diorama layout is set. This article explains in stages how to use backscene papers to add more realism to a layout. Deluxe Materials View Glue adhesive make the accurate positioning of the back scene paper onto a variety of surfaces wood brick paint, foam board etc very easy.

**1:** A typical scenic layout in desperate need of a backscene with all you need to put this right.

**2:** You can use a suitable container if you want to use a larger brush.

**3:** Spread the glue out evenly onto the surface you wish to mount your print on, in this case card (Note that the overall coverage will vary depending on the porosity of the surface).

**4:** With a soft clean cloth squeeze out the air bubbles to the edges of the backscene.

**5:** View Glue will allow you to finely position the prints, a must when aligning the next adjoining scene.

**6:** The joined backscene, any wrinkles or stains will disappear leaving a perfectly flat surface.

**7:** The finished mounted article. Compare the difference to the first picture.



Nick Smith – Making Waves, Making a Waterfall, Making it easy!

## A Waterfall made easy with Making Waves, Scenic Fibres and Solid Water

The waterfall project is possibly one of the most daunting of all water projects to model. The prospect of having to model liquid resins down a vertical drop seems impossible to the amateur modeller. Enter Deluxe Materials Making Waves, which when combined with Deluxe Materials Scenic Fibres forms a perfect base for a vertical water stream. Solid Water makes the perfect water scene at the base of the pool for further texturing. Nick Smith, now shows you how easy it is to model the waterfall of your dreams!

**Step 1** Prepare the diorama and layout. Take great care to fill any holes that may allow the Solid Water to escape from the base.

**Step 2** Paint the base under the water line to give a realistic river bed look using acrylic paints.

**Step 3** Mix the Solid Water as per instructions. Pour into the area to be covered to a depth of 4 to 5 mm.

**Top Tip** – Make sure your diorama is on a level surface during the curing time.

**Step 4** Using the liner from a cereal packet, smear petroleum jelly or a similar product over the area to be used. Take a length of Scenic Fibres and cut to size photo 6. Tease out and place over the petroleum jelly. Using a wide, flat, soft brush, paint the fibres with Making Waves and allow to set.

**Step 5** Peel the now set Scenic Fibres and trim to size for the area to be used. Stick down with Making Waves.

**Step 6** Mix the Solid Water as per instructions. Pour the Solid Water around the Scenic Fibres to the design required and allow to set.

**Step 7** Use a cocktail stick to arrange the Solid Water as it sets.

**Step 8** Using a mix of 50% Making Waves to 50% acrylic paints, build up the fast running water effect over the Scenic Fibres. Job Done!

**Top Tip** – A small soft brush and patience allowing each application to dry will give the best results. Clean brushes in tap water.



## Weigh your Wagon

### Using Deluxe Materials Liquid Gravity

Demonstrated by *George Dent*, model-maker in residence at Model Rail magazine.

Anyone who has ever built a plastic wagon or carriage kit will know that the issue of weight is of vital importance in terms of reliable running.

### Adding weight to your wagons

- Step 1** All you need to get your rolling stock running reliably is correctly fitted wheels and adequate weight. Deluxe's Liquid Gravity is a non-toxic alternative to lead-based weighting products and is easy to use.
- Step 2** If applying Liquid Gravity to the underside of a wagon, a means of retaining the fine pellets is needed. Strips of plastic fixed laterally and butting against the solebars, with enough space for the wheels and bogies to rotate freely, will do the trick.
- Step 3** Pour the Liquid Gravity through the nozzle of the squeezy plastic bottle into the recess. Work within a cardboard box or something similar to contain any spillage for re-use.
- Step 4** Use a scrap of wood or plastic as a tamping tool to level the Liquid Gravity and ensure it reaches into the corners. Aim to get the surface of the metal particles just below the lower face of the solebars.
- Step 5** Use a penetrating adhesive such as Rokat Card Glue or Rokat Hot cyanoacrylate. The use of Micro Tip applicators will help to direct the glue.
- Step 6** Apply glue over the surface of the Liquid Gravity, ensuring that it seeps into all the crevices. If using cyano glue, work in a well ventilated area and avoid applying too much at one time, allowing the fumes to evaporate without risk of damage to soft plastics or painted surfaces.
- Step 7** For smaller vehicles, cramming weight into all available recesses may be necessary, but be careful not to impede the movement of wheels, couplings or bogies.
- Step 8** If you intend adding fixed loads into your freight stock, the weight can simply be spread across the floor and fixed with Rokat Card Glue allowing a few hours for it to cure fully.



## Defying Gravity *By Simon Hammerton*

Liquid Gravity is useful for weighting models which have a potential balance problem. Here we are using the Fujimi 1/72 scale E2-C Hawkeye. This model is a prime candidate for Liquid Gravity as it has a very pronounced tail bias. We will be using Liquid Gravity to give the model the correct 'sit' on its undercarriage.

- 1.** The subject of this exercise, the E2-C Hawkeye, the Liquid Gravity and Rokat Hot. This particular CA glue is the thinnest in the Rokat range and is the most effective for binding Liquid Gravity.
- 2.** In this image we see how the assembled plane sits with its nose up on the left (a), and how we want the plane to be once Liquid Gravity has been applied on the right (b).
- 3.** One way of using Liquid Gravity is to create a cell for the Gravity to flow in to. Here some plastic card has been fixed in place to form the cell.
- 4.** Liquid Gravity consists of small, uniform pellets of non-toxic metal and is formulated to flow into small spaces. Liquid Gravity is poured in to fill the cell.
- 5.** Rokat Hot's thin consistency allows it to flow between the pellets of Liquid Gravity with ease. In very tight areas Rokat Hot can, of course, be applied using Micro Tips and Micro Tube.
- 6.** Here we see how the Liquid Gravity in conjunction with Rokat Hot has created a solid mass of weight.
- 7.** An additional method of applying Liquid Gravity is to pour it in through the wing aperture as seen here.
- 8.** Again use Rokat Hot to bind the Liquid Gravity together.
- 9.** The plane now has the nose bias required to sit correctly on its undercarriage.
- 10.** Our finished Hawkeye painted using Tamiya acrylics and Humbrol enamels.





## A Snow Stopping scene with Deluxe Materials Shovelled Snow

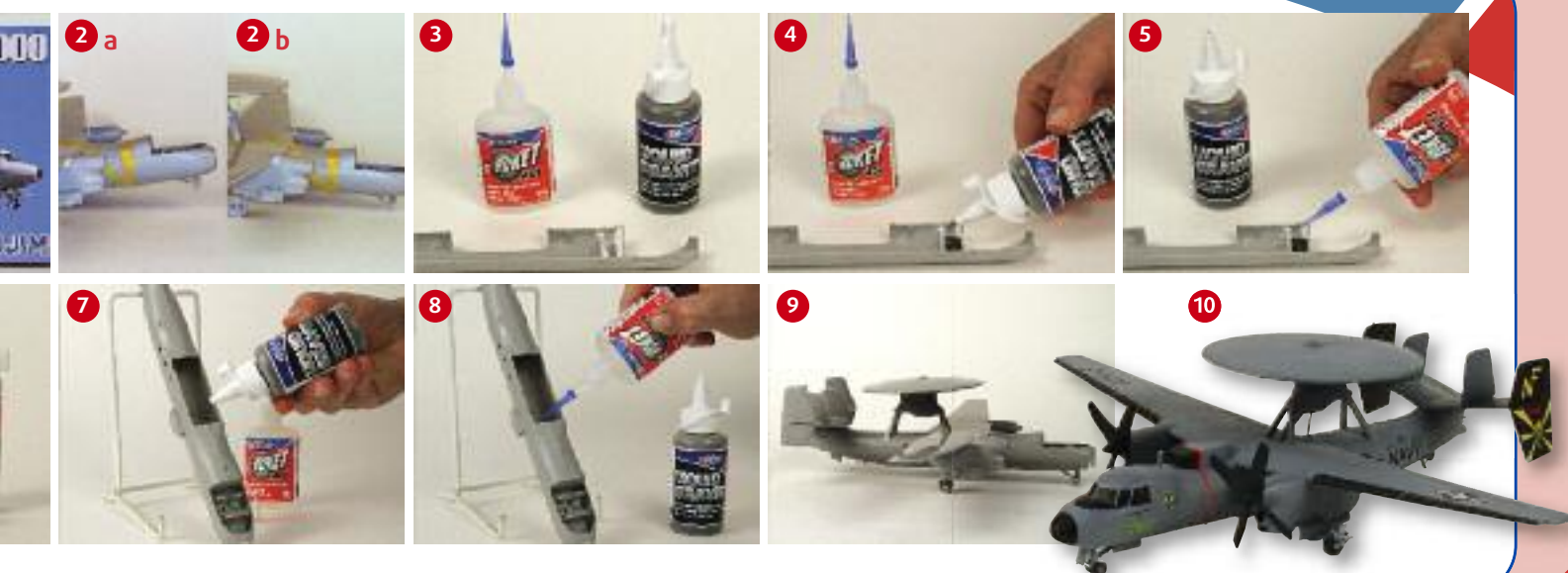
There are many snow systems around in the market. However the difference between a good scene and a dramatic one is the realism that can be created with attention to detail. The simulation of drifted, piled and shovelled snow that will even retain tyre and track impression has remained a problem until now. Enter Scenic Shovelled Snow. This novel type of snow can also be mixed by hand with Speed Bond glue to form snowballs and snowmen!



1. Create your base board and prepare the base with Scatter-Grip. This glue dries tacky giving you plenty of time to work.
2. Sprinkle the ground scatter.
3. The model completed before application of the snow.
4. First apply Scenic Spray to the entire scene, This has a gentle spray action and like Scatter Grip dries tacky so it will bond snow on the branches.
5. First and second applications of Scenic Snowflakes as a base cover.
6. Spray again with a second coat of Scenic Spray and then Scenic Snow flakes.
7. Add Shovelled Snow with a spatula or similar.
8. Glue the Shovelled Snow with Speedbond PVA using pipette.
9. Adding more Shovelled Snow for bigger heaps.
10. Adding more Shovelled Snow but showing the effect of snow by the track after a snow plough had been along.
11. Same techniques used when adding Shovelled Snow to a bulldozer clearing the road.
12. Rescuing stranded vehicle in Shovelled Snow!

Why not add that bit of extra realism to your next winter scene with Deluxe Materials Scenic Shovelled Snow.

*Len Weal / John Bristow, Deluxe Materials*



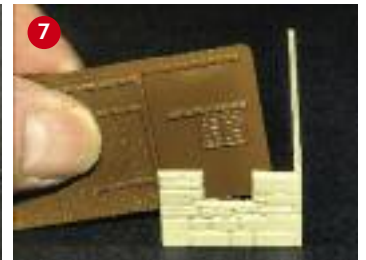
## Deluxe Materials Pin Flow – the Plastic Modellers Solvent Glue Dream applicator.

"Plastic fine scale modelling can be one of the most challenging of all and in the search for perfect glue joints it is not often that you come across something as useful as this!" said *Jenny Wright* national IPMS gold medal winner. *Len Weal* explains how to use this revolutionary device...

1. Drawing Plastic Magic adhesive into the Pin Flow by simply inverting the open end of the tube.
2. Placing your clean finger over the needle to retain the Plastic Magic in the tube.
3. Turn 180 degrees and the liquid will slowly run down to the tip. Loaded device ready for use.
4. Device can be laid down horizontally without the Plastic Magic glue running out.
5. Hold the Pin Flow at an angle and the glue will start to flow.
6. Pin Flow is particularly good at joining interlocking stone walls of a building, such as this barn.
7. These two parts need to be laminated.
8. Shows in contrast when using a brush, the unnecessary amount of glue that is used and the resulting messy joint.
9. Showing how easy it is to attach the roof from the inside of the building with the Pin Flow.
10. Showing all that is needed for a neatly finished building is a combination of Deluxe Materials Plastic Magic and Pin Flow.

**Tips** - Always draw or pull the tip. Never push it as it may block.

- If it becomes blocked then immerse it in glue overnight.
- Replace cover when not in use and store in outer case.
- Clean tip by immersing in second bottle of Plastic Magic.
- Don't contaminate Plastic Magic bottle with a paint brush that might add plastic particles to clog the tip.
- Maybe used to apply cyano accelerator.



## Roket Plastic Glue - Safe as Houses

8 year old Callum discovers help for his plastic modelling with Deluxe Materials non toxic, low odour, water washable Roket Plastic glue.

1. Kits and Roket Plastic Glue and Micro Tips (supplied separately) ready to start.
2. Roket Plastic Glue with two different types of applicator. The fine steel tip is the finest you can buy and comes with a protective cover that needs to go on after use. **And yes it will not block!**
3. Some of the types of plastic Roket Plastic Glue bonds. Some plastics take longer to bond so be patient. It might surprise you.
4. Cleaning up the edges of the part using an emery board, which gives a better finish than a metal file.
5. Making the first join using the steel micro tip applicator. The glue flows beautifully from it to wick into the joint.
6. Once the glue has set it shows a perfect joint.
7. Using the micro tip applicator system to get into difficult areas, i.e. fixing the floor to the sides.
8. Roket Plastic Glue allows the application of a bead of glue to one surface in order to join two surfaces together, without getting glue on your fingers.

*Len Weal and John Bristow*

*Callum Peach* proudly holds his favourite new bottle of Roket Plastic Glue. By using its special applicator, there is no risk of the glue coming into contact with his skin and any contamination can be washed with water.

*Callum* proudly displaying his finished model, which will be an addition for his layout, which is currently being built by himself and his granddad!





## Ways with Water *by Nick Smith*

Nick Smith, who is no stranger to the Deluxe Materials range, gives a step-by-step tutorial on how to get the best result out of the latest product in the water range, "Making Waves". The fact that this new product dries clear yet is stiff enough to be "peaked up" makes it perfect to use when moving water is required says Nick.

Make a stunning Normandy D Day beach scene using Deluxe Materials Making Waves and Scenic Fibres for that realistic crashing surf look.

**Step 1:** Having previously sculpted, fashioned and painted the basic beach scene from plasterboard carve it into the shape required in this case, shallow waves.

I painted it with acrylic paint from tubes & then sealed that with Making Waves. Then apply Making Waves liberally to give that "wet look" to the water.

**Top tip:** Repeated applications of Making Waves to the wave's crests will bring added depth to the water effect.

**Step 2:** For the surf crashing on the beach, tease out then cut the required length of the Scenic Fibres

**Step 3:** Using the Making Waves, adhere the Scenic Fibres onto the top edge of the waves and allow to dry.

**Step 4:** When dry, add a coat of Making Waves over the Scenic Fibres and allow to dry again. Apply a second coat when dry.

**Top tip:** A sharp pair of small scissors will help to trim the fibres into shape when dry.

**Step 5:** To detail the crashing surf, mix equal parts of white acrylic paint and Making Waves and apply using a flat brush.

**Step 6:** Final wave effect only with Deluxe Materials Making Waves



### Making deep clear water, ripples and puddles using Solid Water and Making Waves.

**Step 1:** Mix the Solid Water as per instruction sheet in the pack.

**Top tip:** Mix slowly without creating bubbles.

**Step 2:** Pour Solid Water into the pre prepared area.

**Top tip:** 5-6 millimetre layers will give the best results.

**Step 3:** Ripple effect. When set at the required depth, fill a syringe (without needle fitted) with Making Waves.

**Step 4:** Using various sized needles, make the ripples on the surface of the Solid Water and allow to dry.



### Making puddles and wet footprints

To make puddles or wet foot prints use Solid Water in syringe with a medium needle.

**Top tip:** To make Solid Water less viscous you can microwave for a few seconds (5 seconds max!)



## How to buy: Modellers

Please support your local dealer by buying direct from them. Alternatively, in case of difficulty or you have no local dealer buy on-line [www.deluxematerials.co.uk](http://www.deluxematerials.co.uk) Freephone 0800 298 5121

plus

At [www.deluxematerials.com](http://www.deluxematerials.com)

- \* View our latest videos
- \* Download our catalogue
- \* Latest how to articles
- \* Hints and tips section

## Dealers

Contact your preferred distributor (see below) who can also supply a dealer support CD with latest video links, website images etc.



# Modellers' Quick Reference Glue Guide

Product guide	Balsa	Hardwood	Metal	ABS	Styrene	PVC	Plastic card	Acrylic	Butyrate	Polycarbonate/Lexan	Epoxy GRP	Polyester GRP	Glass & Ceramic	Oily Wood / Metal	Painted Wood	Lightweight Glass fibre	Large areas of Veneer or Ply	Card /paper	Carbon fibre	Covering Film & Trim	Foam White/Blue EPS	Foam Expanded Polyolefin	Foam EPP
Super Crylic!			✓	✓	✓	✓	✓	✓	✓	✓	✓	✓		✓	✓	✓	✓	✓	✓		✓	✓	✓
Speed Epoxy (all types)	✓	✓	✓	✓	✓			✓		✓			✓						✓		✓	✓	✓
R/C Modellers Glue	✓	✓		✓	✓			✓							✓	X		✓		✓			
Roket Hot, Rapid, Max	✓	✓	✓	✓	✓	✓	✓		✓	✓	✓	✓	✓		✓			✓	✓		X	✓	✓
Roket Odourless	✓	✓	✓	✓	✓	✓	✓	✓	✓	✓			✓						✓		✓	✓	✓
Super'Phatic	✓	✓		✓	✓	✓	✓				✓	✓				✓	✓		✓	✓	✓	✓*	
Aliphatic Resin	✓	✓															✓						
Speed Bond	✓	✓														✓	✓	✓			✓		
Roket Blaster	✓	✓	✓	✓	✓	✓	✓	✓	✓	✓	✓	✓									X		✓
Foam Blaster			✓	✓	✓	✓	✓	✓							✓						✓	✓	✓
Plastic Magic				✓	✓	✓	✓	✓	✓	✓							X						
Fusion			✓	✓	✓	✓	✓	✓	✓	✓	✓	✓	X	X	X	X	X	X	X	X	X	X	X
Cover Grip	✓	✓															✓			✓	✓		
Foam 2 Foam	✓	✓		✓	✓	✓	✓		✓	✓	✓				✓				✓		✓	✓	✓
Roket Card Glue	✓	✓			✓											✓	✓	✓	✓				
View Glue		✓		✓		✓	✓								✓			✓			✓		
Roket Plastic Glue				✓	✓		✓																

Recommended by manufacturers worldwide:

KEY: ✓✓ Best    ✓ Good    X Not Suitable    \* Exposed Joints

**GAUGEMASTER.com**    **DEANS MARINE**



**Modellers:** Please support and buy from your local model shop.

In case of difficulty see mail order details below.

**Dealers:** Use your preferred distributor - see below and full list on website.

**Distributors:** Hobby's. [www.hobby.uk.com](http://www.hobby.uk.com) tel: 020 8761 4244 / fax: 020 8761 8796

Ripmax Ltd. [www2.ripmax.net](http://www2.ripmax.net) tel: 020 8282 7500 / fax: 020 8282 7501

Gaugemaster. [www.gaugemaster.com](http://www.gaugemaster.com) tel: 01903 884488 / fax: 01903 884377

Streets Ahead. [www.streetsaheaddollhouse.com](http://www.streetsaheaddollhouse.com) tel: 01752 338222 / fax: 01752 339395

Blackwells. [www.blackwells-miniatures.com](http://www.blackwells-miniatures.com) tel: 01702 200036 / fax: 01702 204211

Creative Models Ltd. [www.creativemodels.co.uk](http://www.creativemodels.co.uk) tel: 01354 760022 / fax: 01354 760037

Historex. [www.historexagents.com](http://www.historexagents.com) tel: 01304 206720 / fax: 01304 204528

Squires Tools. [www.squirestools.com](http://www.squirestools.com) tel: 01243 842424 / fax: 01243 842525

SAM Shop Guideline Publications. email: [guidelines@regallitho.co.uk](mailto:guidelines@regallitho.co.uk) tel: 01908 274433 / fax: 01908 270614

Hobbies. [www.always hobbies.com](http://www.always hobbies.com) tel: 01508 549330 / fax: 01508 549331

Expo Drills & Tools. [www.expotools.com](http://www.expotools.com) tel: 01646 672440 / fax: 01646 672460

### NORTH AMERICA

Horizon Hobby. [www.horizonhobby.com](http://www.horizonhobby.com) tel: 1-800 535 5551 (dealers),

tel: 1-800 338 4639 (consumers)

Ontario Adhesives. email: [chris1@ontarioadhesives.ca](mailto:chris1@ontarioadhesives.ca) tel: 519 733 0416

**Mail order/on-line:** [www.deluxematerials.co.uk](http://www.deluxematerials.co.uk) Freephone: 0800 298 5121

**www.deluxematerials.com**

email:[info@deluxematerials.com](mailto:info@deluxematerials.com)

### Acknowledgements

I should like to acknowledge my special thanks to the following expert modellers who have kindly contributed their wonderful work in this catalogue.

### Scale and Plastics

Simon Hammerton

Nick Smith

Jose Brito

Jenny Wright

### Miniatures

Catherine Davies

[www.dollshouseheaven.co.uk](http://www.dollshouseheaven.co.uk)

### RC Models

Roy Thomson

Rick Godley

Nigel Hawes / RCME magazine

Martin Bedding

### Railway modelling

George Dent and Model Rail magazine

Len Weal

Terry Smith of Gaugemaster

### Model car expert

Joe Brown RC Racer Magazine -

[www.rcracer.com](http://www.rcracer.com)

